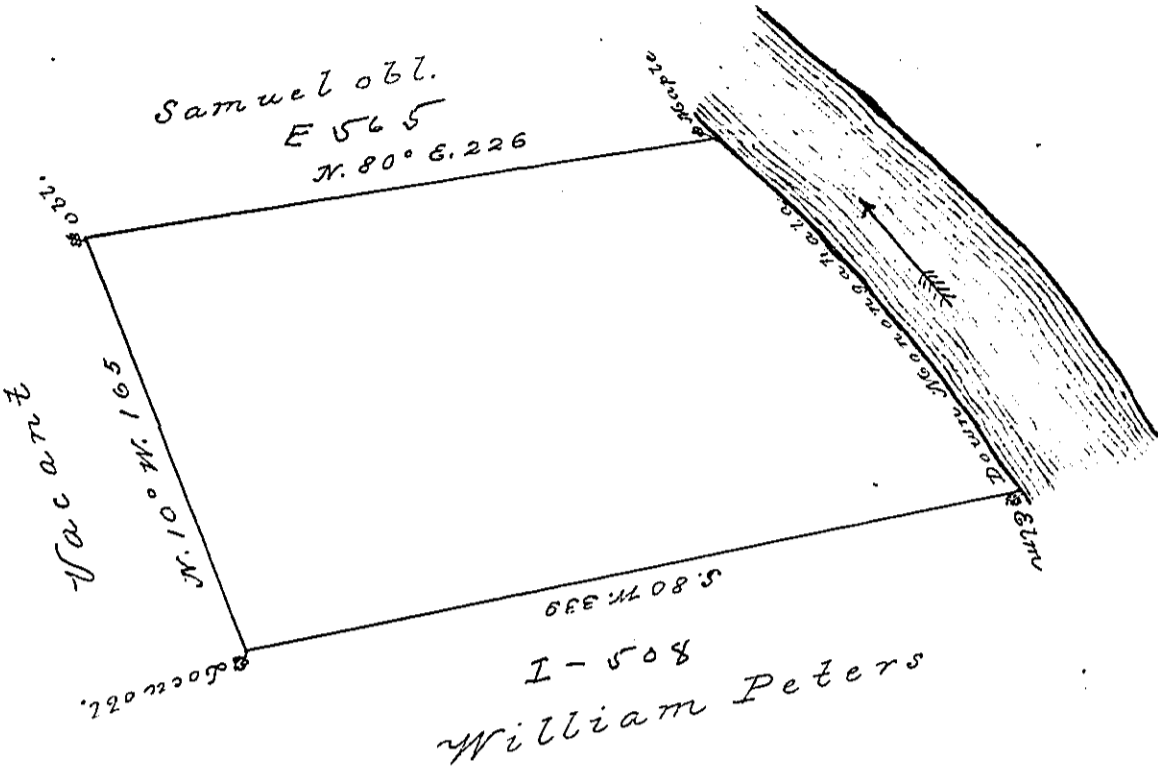


Courses up Monongahala }
 S. 57° E. 154 P. }
 S. 7° E. 57 P. }
 Total 211



In pursuance of an order no. 2853, dated 5th April, 1769 the above is a draught of a tract of land called Turkey Bottom containing 293 acres & the usual allowance of 6 p c. for roads &c. Situated on the West side Monongahala, surveyed, 7th October 1769 for Thomas Swearingen Jr.

To John Lukens Esqr.
 Surveyor Obl.

By James Hendricks D. S.

IN TESTIMONY that the above is a copy of the original remaining on file in the Department of Internal Affairs of Pennsylvania, made conformably to an Act of Assembly approved the 16th day of February, 1833. I have hereunto set my Hand and caused the Seal of said Department to be affixed at Harrisburg, this

Sixth day of October 1896

James Whitte
 Secretary of Internal Affairs.